

SCAN~LINK Technologies Inc.



[RAPIDPAIR™ INSTALLATION QUICK GUIDE v.1]

This user's guide is intended for Rapid Pair user technicians. This guide is provided as a quick guide through Rapid Pair for the download of data logs.

Overview

The RapidPair™ Dongle and RapidPair™ software is used to pair SCAN~LINK Antenna and Display Units together, as well as for configuring SCAN~LINK node parameters. Data Download Logs are also gathered via RapidPair™.

1. Log into Support Page

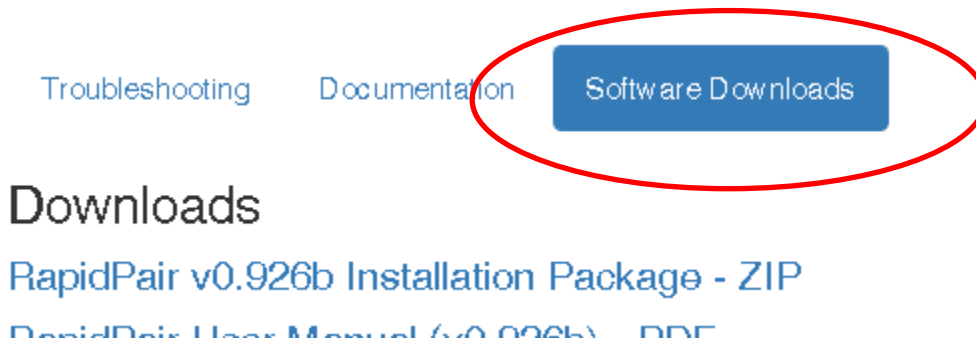
Using your web browser, go to support.scan-link.com. Log in using the following credentials:

Username: resources

Password: sc@nlink32!

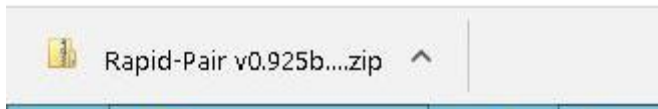
2. Select Software Downloads

On the top headers (Troubleshooting / Documentation / Software Downloads), select Software Downloads.



3. Download RapidPair™ Software

Select RapidPair v0.925b Installation Package – ZIP. The file will begin to download automatically.



4. Install RapidPair™

Open the downloaded file and select Rapid Pair Installer.msi program. Follow installation instructions and open the program.

Name	Type	Compressed size
.NET Framework	File folder	
Drivers	File folder	
User Manuals	File folder	
Rapid Pair Installer.msi	Windows Installer Package	3,724





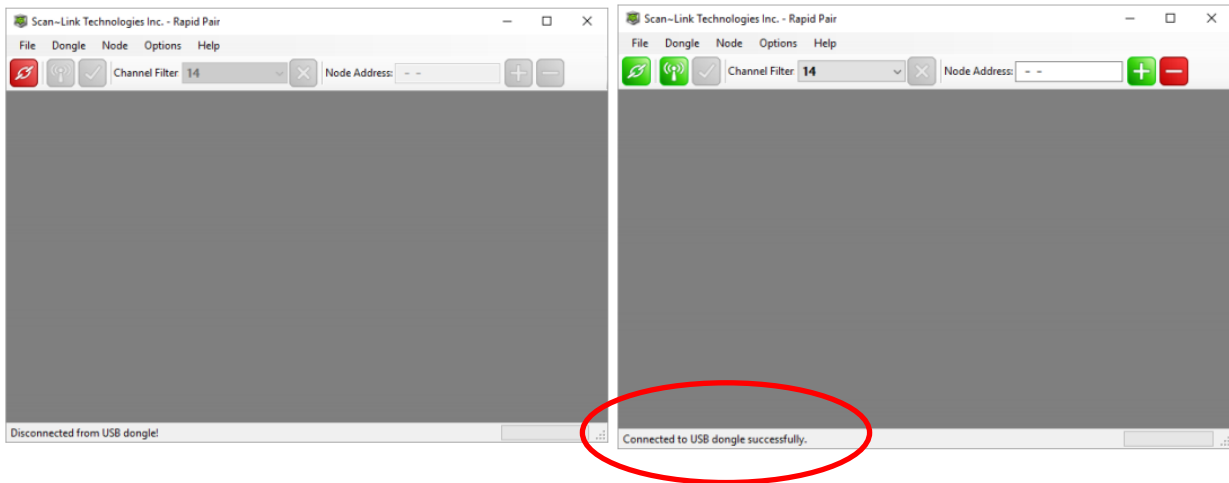
5. Launch RapidPair™

Once the main RapidPair™ window is displayed, plug in the USB Dongle into a USB port in the computer/laptop.





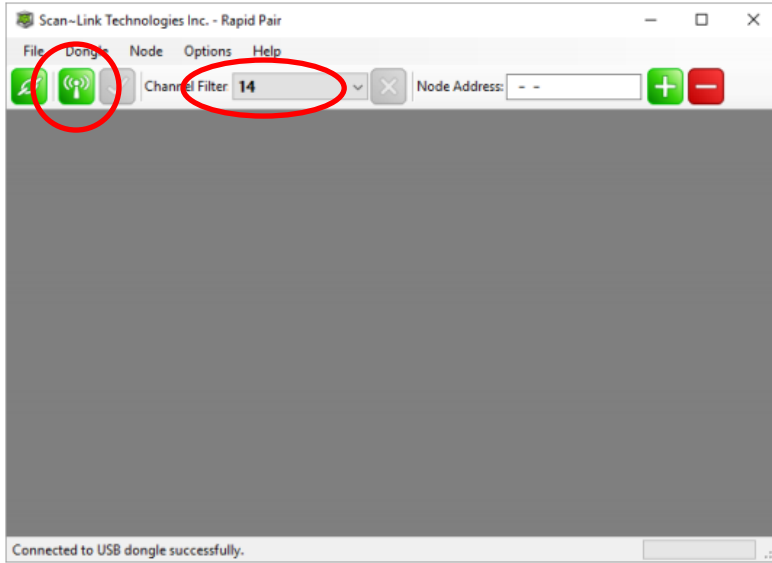
6. Connect to USB Dongle

Click on the red button  that appears on the far left hand side of the RapidPair™ toolbar. This is the "Connect Button". Once connected, the "Connect" button's colour will turn green  to indicate that the software has established a connection with a dongle. Once connected to a dongle, the "Connect" button can be clicked on again to disconnect the RapidPair™ software from the dongle. As well, the status bar message will indicate that RapidPair™ has successfully connected to the dongle.



7. Pinging Units

The “Ping Nodes” button  will also become active once RapidPair™ has established a connection to a supported dongle, indicating that the dongle is now ready to query SCAN~LINK nodes. When connected to a dongle, Select channel 14 and press the “Ping Nodes” button. 



8. Selecting Node

Nodes can be selected and moved around in the main node display area once they have been found by RapidPair™. To select a node, place the mouse cursor over the node to be selected and click the left mouse button. This will place a green circle around the node to indicate that the node is now selected. From here, you can change any of the settings as well as a download the Data Log. To download the data log, please read “Data Download Quick Guide v2.pdf”.

