



## **BEFORE UNPACKING READ THIS GUIDE!**

---

**This Quick Start Guide will show you how to use the  
SCAN~LINK Desktop Tag Health Tester.**

### **CONTENTS**

|                              |                |
|------------------------------|----------------|
| <b>PACKAGE CONTENTS</b>      | <b>PAGE 2</b>  |
| <b>SOFTWARE INSTALLATION</b> | <b>PAGE 3</b>  |
| <b>USAGE</b>                 | <b>PAGE 4</b>  |
| <b>TROUBLESHOOTING</b>       | <b>PAGE 8</b>  |
| <b>SPECIFICATIONS</b>        | <b>PAGE 9</b>  |
| <b>AGENCY CERTIFICATIONS</b> | <b>PAGE 10</b> |
| <b>LIMITED WARRANTY</b>      | <b>PAGE 11</b> |

## **PACKAGE CONTENTS:**

---



SCAN~LINK Desktop Tag Health Tester with 5V 4A Power Supply

## **EQUIPMENT/ MATERIALS REQUIRED:**

---

- A Laptop running Windows 7 or higher and a free USB port
- An Internet Connection for Software Download

## **SERIAL NUMBER**

---

Write these down now before installing:

00 : 1C : 2C : XX : XX : XX : XX :  
XX

Desktop THT

---

## **SOFTWARE INSTALLATION**

---

***Do not plug the Tag Health Tester in to your computer until you have installed the drivers and software!***

**First**, go to [www.scan-link.com](http://www.scan-link.com) and download the Tag Health Tester Installation Package. You can find it in the ‘Resources’ section of the website, which is password-protected. The log-in information is below:

|                  |                  |
|------------------|------------------|
| <b>Username:</b> | <b>resources</b> |
|------------------|------------------|

---

|                  |                    |
|------------------|--------------------|
| <b>Password:</b> | <b>sc@nlink32!</b> |
|------------------|--------------------|

The ZIP file contains two files; drivers for the USB interface (in the FTDI folder), and the Tag Health Tester software itself. Install the drivers first, then the Tag Health Tester software.

You are now ready to begin using the Tag Health Tester!

# USAGE INSTRUCTIONS

---

## POWER UP AND CONNECT

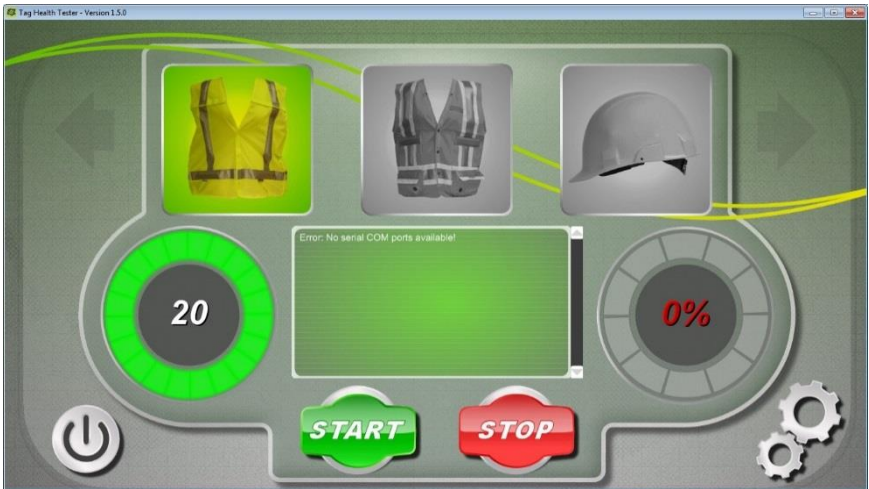
Plug in the power adapter to the wall, and insert the barrel connector in to the base of the Tester. Plug the USB cable in to your computer. Windows should install the drivers automatically, and alert you when it is done doing so.

Ensure the face of the Tester (the side that reads SCAN~LINK across it diagonally) is facing upward.

## START THE SOFTWARE

Once Windows has let you know the drivers were installed properly, you may start the program.

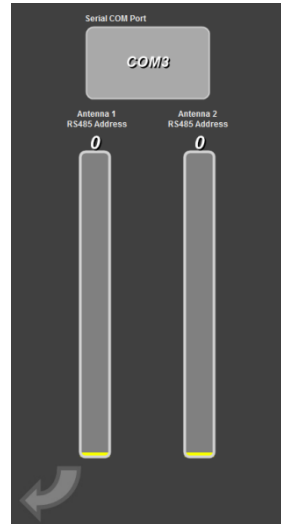
From the Start Menu, choose Tag Health Tester (Desktop). A new window will appear that looks like this:



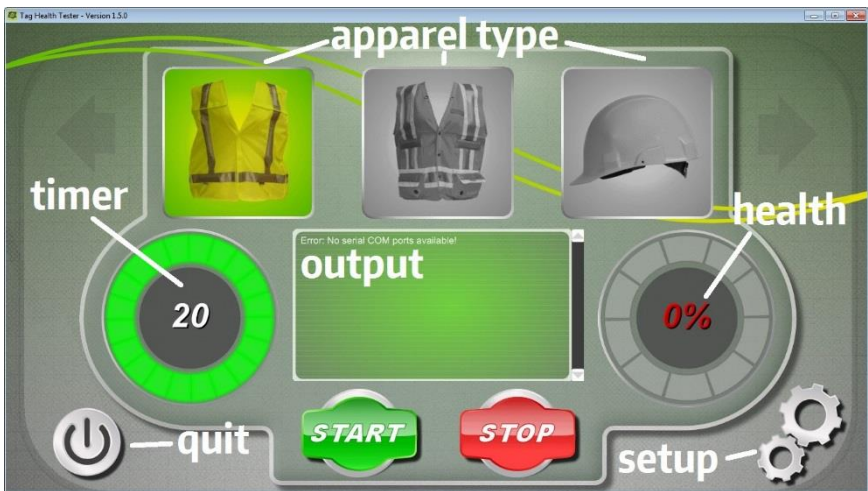
## SETTINGS

By clicking on the gears in the bottom-right corner you will see a settings page. Ensure that both sliders are all the way to the bottom (set to 0); this should be default. The COM port shown at the top may differ from the one shown in the image to the right.

Click the arrow in the bottom left corner to close this screen. You are now ready to test some apparel!



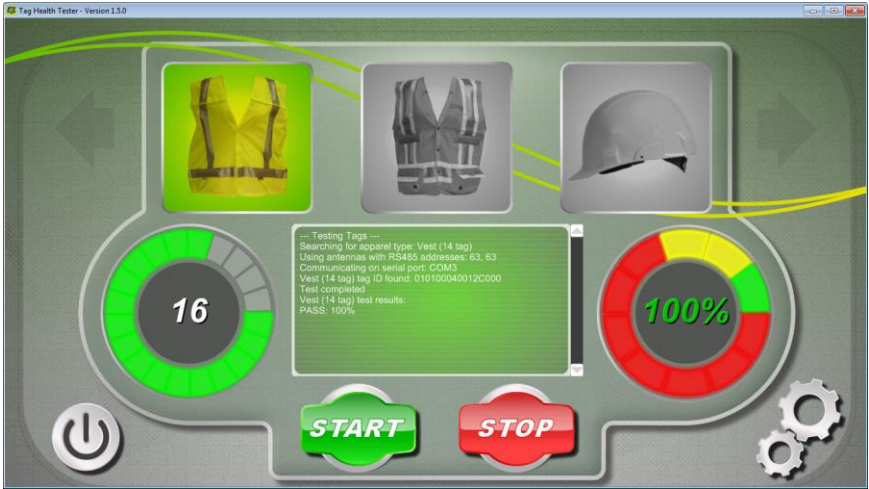
## USAGE



First, select the type of apparel you wish to test – yellow vest, orange vest, or hard hat – by clicking on the respective apparel type icon at the top of the screen.

Place the apparel on the Tester and press the ‘Start’ button. The timer will begin to count down, and the health tester will approach 100% as tags are detected. Scan time is typically under five seconds.

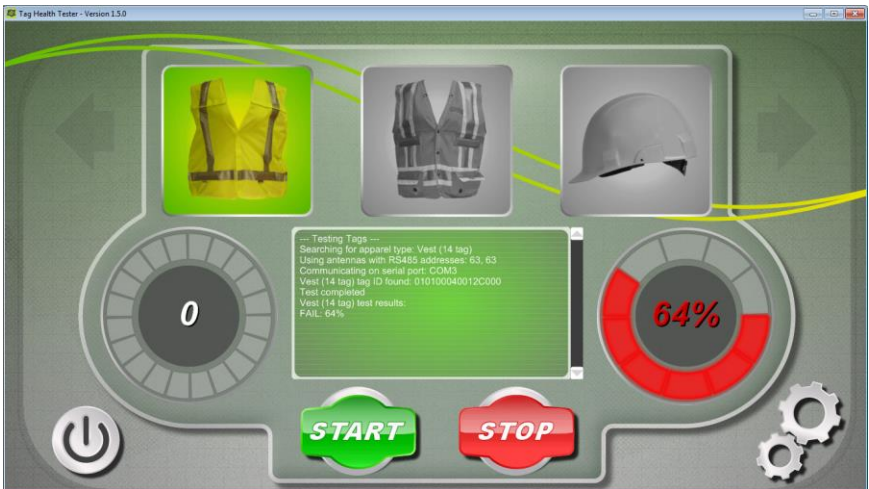
When the scan is complete, and if all tags are okay, you should see this:



The output screen will indicate the serial number of the apparel, and how many tags were detected.

A piece of apparel will pass if more than a minimum number of tags are detected.

If there are tags that cannot be detected, the scan will time out after twenty seconds, and you'll get a screen like this:



This means that (in this case) only 9 of the 14 (64%) tags in the vest are functioning properly, and the vest should not be used.

Ensure to re-test a piece of apparel before discarding it, as poor positioning of the apparel can cause erroneous readings. You may move the apparel while scanning to ensure all the tags are within the detection zone above the Tag Health Tester. In some cases, you may get better results holding the apparel 8.5-12” (21-30cm) above the antenna while it scans and changing its orientation, especially for bulkier items (such as the orange Surveyor vest).

## **COPYING DATA**

Upon a successful scan, you may double-click anywhere in the green output box to copy the apparel information to the clipboard. The information is plain-text, and looks like this:

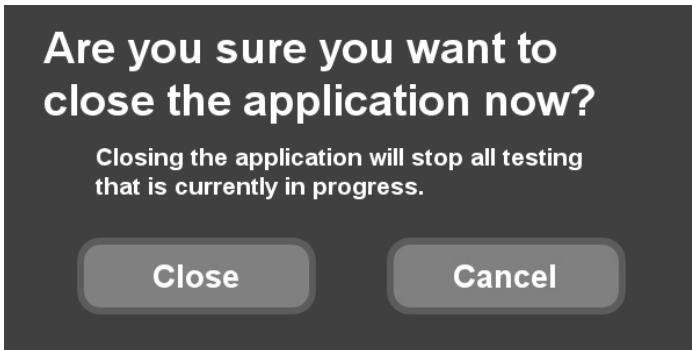
```
Vest (14 tag) tag ID found: 010100040012C000
```

```
<apparel type> tag ID found: <serial number>
```

You can paste this in to a spreadsheet or other piece of tracking software for assigning an employee or visitor to a piece of apparel for tracking.

## **EXITING**

Press the quit button (the power icon) in the bottom-left of the window. A confirmation dialog will appear:



Press ‘Close’ to exit.

# **TROUBLESHOOTING**

---

## **ERR: Communications timeout**

Ensure that the channels are both set to 0 in the settings section.

## **Error: No serial COM ports available!**

Ensure that the drivers have been installed and the USB cable is connected. Try a different USB port if it continues to malfunction; this forces Windows to re-install the drivers.

## **Apparel works fine in the field but the tester doesn't pass**

A SCAN~LINK Armour system alarms for the detection of even a single tag. We include many tags (up to fifteen in an orange Surveyor's vest) to increase redundancy and to cover more angles for improved detection – as the RFID scan won't pass through a human body.

A vest that is detected in one direction may not be detected in another – for instance, a worker sitting or kneeling facing away from a machine may not be detected if the tags on the back or top of the garment are not functioning.

## **Mouse pointer won't appear in the window**

You have started the Tag Health Tester in Kiosk mode. Simply move your mouse to the bottom of the screen, right click on the Tag Health Tester program icon in the task bar, and click on 'Close'. Ensure that you start the Desktop version instead.

If you have somehow managed to click on the Quit button, do not press 'Shut Down' in the confirmation window, as this will turn off your PC. Follow the instructions above and use the Desktop version instead.



# SPECIFICATIONS

---

## Desktop THT

| Item                        | Value               | Notes  |
|-----------------------------|---------------------|--|
| Input Voltage               | 5V DC               |  |
| Input Current               | 1.5A                |  |
| Power Consumption           | 7.5W                |  |
| Length                      | 246mm (9-3/4")      | With backplate facing downward               |
| Width                       | 165mm (6-1/2")      |  |
| Height                      | 128mm (5-1/4")      |  |
| PC Connection               | USB-A Male          |  |
| Required OS                 | Windows 7 or Higher |  |
| Temperature Range           | -20°C to +50°C      | Ambient                                      |
| RFID Sensor Radio Frequency | 920 – 926 MHz       | FHSS, 3W EIRP                                |
| Registration                | ACMA                | Responsible Supplier No: E5                  |
| FCC ID                      | YUU-SLAU270NB       | Registered under SCAN-LINK Technologies Inc. |
| Ingress Protection          | Designed for IP-65  | Do NOT immerse                               |
| RoHS Compliant              | Yes                 |  |

# AGENCY CERTIFICATIONS

---

## FCC

This device complies with part 15 of the FCC Rules. Operation is subject to the following two conditions: (1) This device may not cause harmful interference, and (2) this device must accept any interference received, including interference that may cause undesired operation.

Any changes or modifications of this product, not approved by manufacturer will void the user's authority to operate the equipment.

This equipment has been tested and found to comply with the limits for a Class A digital device, pursuant to part 15 of the FCC Rules. These limits are designed to provide reasonable protection against harmful interference when the equipment is operated in a commercial environment. This equipment generates, uses, and can radiate radio frequency energy and, if not installed and used in accordance with the installation manual, may cause harmful interference to radio communications. Operation of this equipment in a residential area is likely to cause harmful interference in which case the user will be required to correct the interference at his/her own expense.

## IC

This device complies with Industry Canada licence-exempt RSS standard(s). Operation is subject to the following two conditions: (1) this device may not cause interference, and (2) this device must accept any interference, including interference that may cause undesired operation of the device.”

Le présent appareil est conforme aux CNR d'Industrie Canada applicables aux appareils radio exempts de licence. L'exploitation est autorisée aux deux conditions suivantes : (1) l'appareil ne doit pas produire de brouillage, et (2) l'utilisateur de l'appareil doit accepter tout brouillage radioélectrique subi, même si le brouillage est susceptible d'en compromettre le fonctionnement.

## FCC/IC

To comply with FCC/IC RF exposure limits for general population / uncontrolled exposure, the SCAN~LINK™ Antenna Unit and the Operator Display Unit must be installed to provide a separation distance of at least 20 cm (8 inches) from all persons and must not be co-located or operating in conjunction with any other antenna or transmitter.

For further information on RF exposure and compliance, please visit the following links:

<https://support.scan-link.com>

<https://apps.fcc.gov/oetcf/eas/reports/GenericSearch.cfm>

<https://sms-sgs.ic.gc.ca/search/radioEquipmentPortal>

# LIMITED WARRANTY

---

## Manufacturer Limited Warranty and Limitation of Liability

### Warranty Coverage

1. SCAN~LINK Technologies Inc. (“SCAN~LINK”) warrants to the original end-user purchaser (“Purchaser”) of this SCAN~LINK device (“Device”) that the Device will be free from defects in materials and workmanship and will operate without mechanical failures under normal use, as defined in this Limited Warranty, for a period that commences on the date that the Device was delivered to the vendor who sold the Device (“Dealer”) or delivered to the Purchaser, whichever date occurs first, and continues for twelve (12) months thereafter (“Warranty Period”).
2. The warranty provided in this Limited Warranty is the only warranty SCAN~LINK provides for the Device. SCAN~LINK gives no other guarantee, warranty or condition, express, statutory, implied or collateral. No one else may give any guarantee, warranty, or condition on SCAN~LINK’s behalf.
3. This Limited Warranty is not transferrable and is limited to the first Purchaser of the Device only.
4. If SCAN~LINK repairs or replaces the Device during the Warranty Period, the Warranty Period for the repaired or replaced Device will expire upon the expiration of the original Warranty Period. Moreover, the time taken for transit, repair and/or replacement whether under the Limited Warranty or otherwise shall not be excluded from the Warranty Period.
5. Warranty repairs must be carried out by SCAN~LINK or its authorized agents. This Limited Warranty will be void if repairs are attempted by any unauthorized party, including the Purchaser.
6. Warranty service or support provided by or on behalf of SCAN~LINK under this Limited Warranty is conditional on the Purchaser reporting any problem(s) with the Device to the Dealer within the Warranty Period.
7. The Dealer and SCAN~LINK working in conjunction will initially attempt to troubleshoot the Purchaser’s concerns onsite with the Purchaser.
8. If SCAN~LINK determines that the Device qualifies for mail-in service, SCAN~LINK will issue a Return Merchandise Authorization (“RMA”) authorizing shipping of the Device to SCAN~LINK.
9. Any Device shipped to SCAN~LINK is to be mailed in accordance with SCAN~LINK’s instructions. SCAN~LINK bears no responsibility for any Device not shipped in accordance with its instructions.
10. After receiving the Device, if SCAN~LINK determines that the Device is defective and covered under this Limited Warranty, SCAN~LINK may at its absolute and sole discretion:
  - i. Repair the defective portion of the Device without charge to the Purchaser with new or reconditioned parts;
  - ii. Replace the defective Device without charge to the Purchaser with a comparable new or refurbished device; or
  - iii. Refund to the Purchaser the purchase price paid for the Device.
11. If SCAN~LINK determines that the Device is not covered by this Limited Warranty or that the Limited Warranty has been rendered void, SCAN~LINK will charge a fee for its

efforts to diagnose and service any problems with the Device, reflecting its time, the cost of parts, and return shipping fees.

12. Service options, parts availability and response times may vary.
13. If SCAN~LINK provides a replacement Device, the returned Device becomes the property of SCAN~LINK and the replacement Device becomes the property of the Purchaser.

### **Warranty Exclusions and Limitations**

14. As determined solely by SCAN~LINK, the Limited Warranty does not apply in situations where damage, malfunction, or defect to the Device is caused by or results from:
  - i. misuse, alteration, modification, proximity or exposure to heat, accident, act of God, abuse, neglect or misapplication;
  - ii. use of the Device in conjunction with accessories, products, services, software, applications, or ancillary or peripheral equipment not expressly approved or provided by SCAN~LINK specifically for use with the Device;
  - iii. improper installation or operation not consistent with the Maintenance Procedures set out in the Manufacturer's Installation and Operating Instructions; or
  - iv. failure to maintain the Device in accordance with the Maintenance Procedures set out in the Manufacturer's Installation and Operating Instructions.

### **Limitation of Liability**

15. Except to the extent that SCAN~LINK is expressly prohibited by law from limiting or excluding remedies in relation to the Device, this Limited Warranty sets out the Purchaser's exclusive remedies for the Device and any other warranties, conditions, representations, or guarantees of any kind, either express or implied, including but not limited to implied warranties of merchantability, satisfactory quality and/or fitness for a particular purpose are hereby disclaimed and shall not apply or have any affect.
16. SCAN~LINK is not responsible for any indirect, incidental, special or consequential damages (including without limitation damages for loss of profits, business interruption, or other pecuniary loss) arising out of the use or inability to use the Device. These exclusions apply even if SCAN~LINK has been advised of the possibility of these damages and even if any remedy fails of its essential purpose. This limitation is intended to apply and does apply without regard to whether such damages are claimed, asserted or brought in an action or claim in tort, contract, on the warranty, or under any other legal theory. The liability of SCAN~LINK and anyone acting on behalf or with SCAN~LINK for loss or damage arising under this Limited Warranty shall not exceed in aggregate the price paid by the Purchaser for the Device or the cost of replacing the Device, whichever is greater.

### **Governing Law**

17. This Limited Warranty is governed by the laws of Ontario and the laws of Canada applicable therein.

### **Miscellaneous**

18. All claims made under the Limited Warranty are governed by the terms set out herein. If there is any conflict between this Limited Warranty and any other warranty provided to the Purchaser, the provisions of this Limited Warranty shall be applied to SCAN~LINK to the extent of such conflict.

19. If any term, provision or subsection of this Limited Warranty is held to be void, illegal or unenforceable, the validity or enforceability of the remainder of such term, provision or subsection and this Limited Warranty will not be affected.

This document is copyright SCAN~LINK Technologies Inc., 2016.

All trademarks property of their respective owners.

Please visit our website for current documentation.

[www.scan-link.com](http://www.scan-link.com).